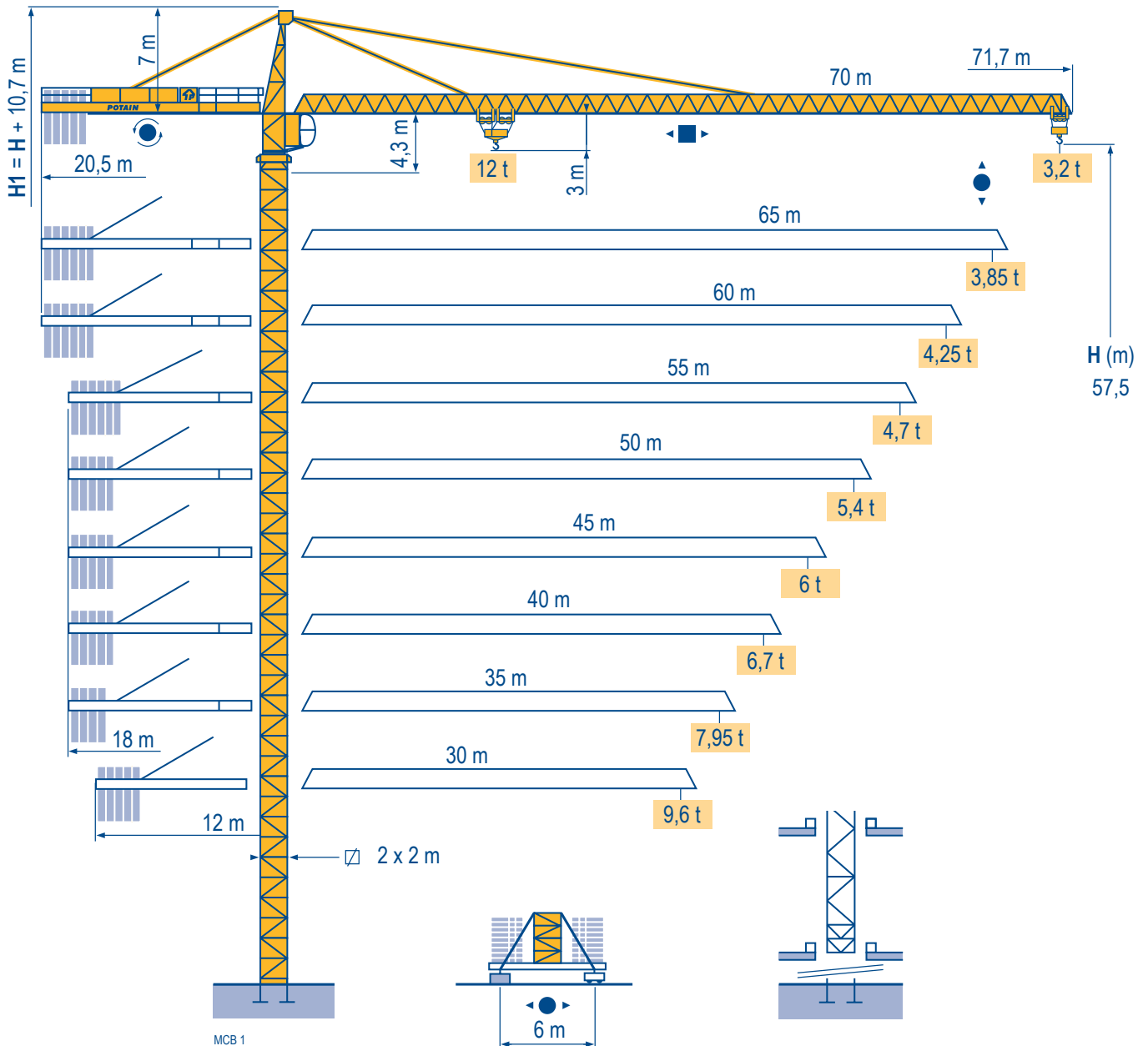


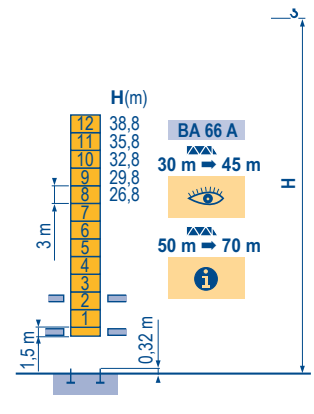
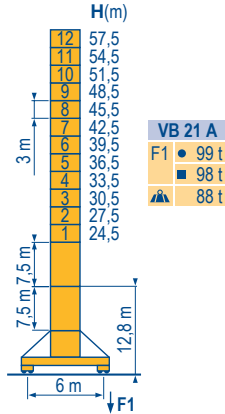
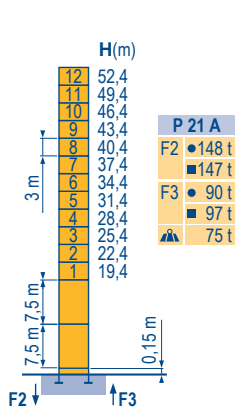
MC 310 K12



Masts / Reactions

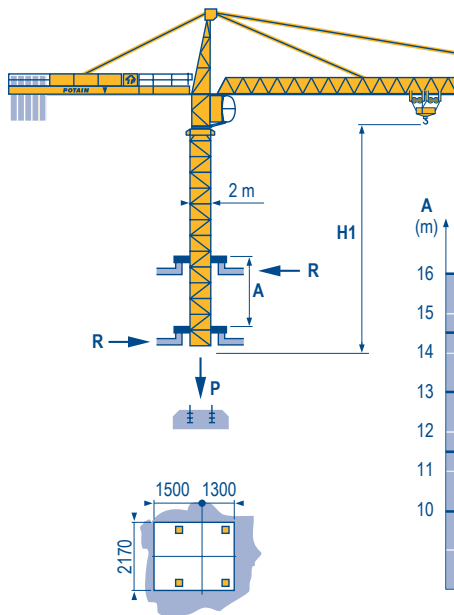
MCB 1

□ 2 m
 ▴ 30 m → 70 m



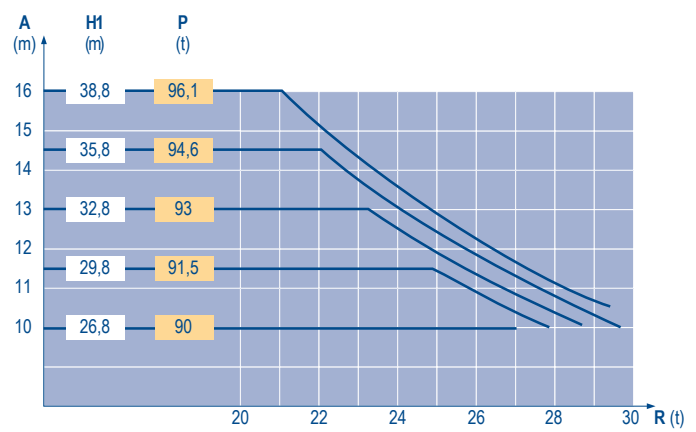
Climbing crane

MCB 1



BA 66 A

▴ 30 m → 45 m



TOPKIT MC 310 K12

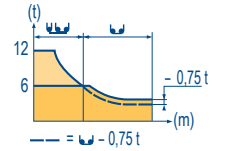
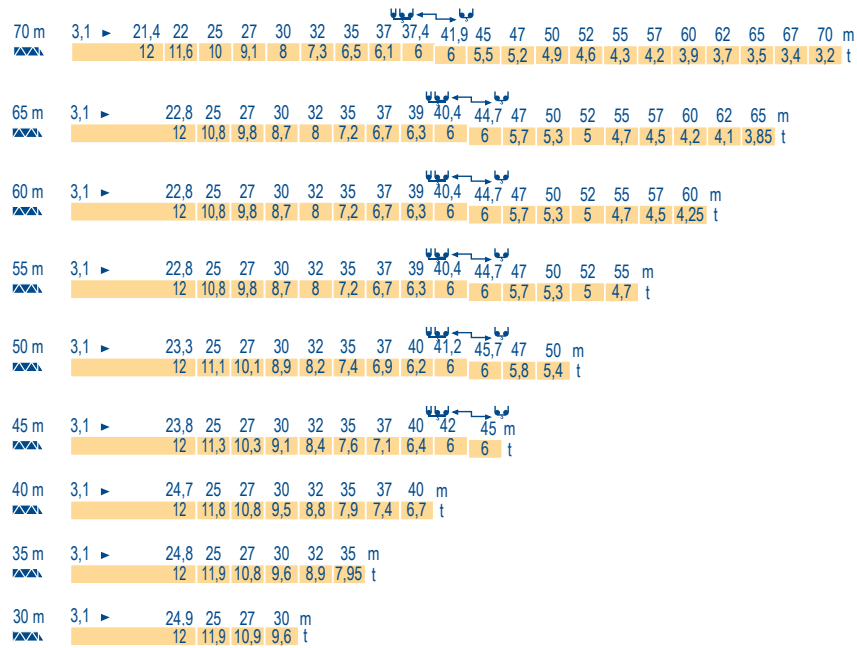


GB

- Reactions in service
- Reactions out of service
- ▲ Without load, ballast (or transport axles), with maximum jib and maximum height.
- i Consult us
- 👁 See climbing crane

Load diagrams

MCB 1



Counter-jib ballast

MCB 1

	4 600 - 4 200 - 2 300 kg		4 200 - 700 kg	
	Icon	(kg)	Icon	(kg)
70 m		24 500		24 500
65 m		23 700		23 800
60 m		21 800		21 700
55 m		24 900		24 500
50 m		22 600		22 400
45 m		19 500		18 900
40 m		17 200		16 800
35 m		14 900		14 000
30 m		20 700		20 300

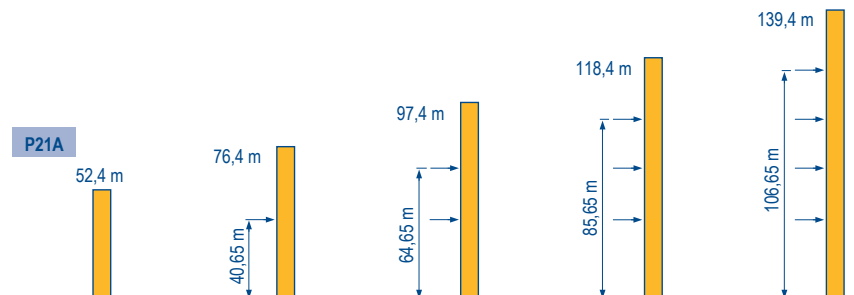
Base ballast

MCB 1

2 m	VB 21 A	H (m)	57,5	54,5	51,5	48,5	45,5	42,5	39,5	36,5	33,5	30,5	27,5	24,5	21,5
		(t)	84	72	72	72	72	72	72	60	60	60	60	60	60

Anchorage

MCB 1



TOPKIT
MC 310 K12



POTAIN

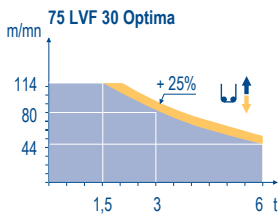
GB

- A Distance between collars
- H1 Crane height
- P Crane weight (in service)
- R Horizontal reaction

Mechanisms

MCB 3

		↕ ↑		↕ ↓		hp	kW		
↑	70 RCS 30	m/min	0 → 40	0 → 80	0 → 20	0 → 40	70	51	523 m
		t	6	3	12	6			
↑	75 LVF 30 Optima	m/min	0 → 44 → 56 → 80 → 114		0 → 22 → 28 → 40 → 57		75	55	570 m
		t	6	4,5	3	1,5			
↔	6 D3 V4	m/min	15 - 50 (12 t) 100 (6 t)				7,4	5,4	
↻	RVF 162 Optima	rpm	0 → 0,7				2 x 7,5	2 x 5,5	
↻	VB 20A VB 21A	RT 544 A1 2V R ≥ 13 m	13,5 - 27				4 x 7	4 x 5,2	
		CEI 38 	IEC 38		kVA				
		400 V (+6% -10%) 50 Hz				70 RCS : 100 kVA 75 LVF : 100 kVA			



GB

-  Hoisting
-  Trolleying
-  Slewing
-  Travelling



This commercial document is not legally binding.
For any technical information, please refer to the corresponding instructions.



Americas
Tel : +1 888 479 7278
Tel : +1 717 593 2000

Europe – Middle East – Africa
Tel : +33 (0) 4 72 81 50 00
Tel : +44 (0) 191 522 2000

Asia – Pacific
Tel : +65 6264 1188
Fax : +65 6862 4040

www.manitowoccrane.com

Manitowoc Crane Group Asia Pte Ltd
Manitowoc Crane Group
4 Kwong Min Road
Singapore 628707
Tel: +65 6264 1188
Fax: +65 6862 4040
www.manitowoccrane.com

MC 310 k12
Réf. 2004 45 MCB 3

Copyright.Reproduction interdite © POTAIN 2004

Réalisation Sedoc